



*i*CR-2000SL

Digital Imaging Excellence



Computed Radiography Film Digitizers Teleradiology PACS

iCR-2000SL

High Resolution and astounding Reliability at low cost

The 2000SL's 16 bit source file and an Optical Density range of 0.01 to 4.7 makes it one of the leading Film Digitizers in the market. Scan capabilities of up to 1000 DPI across 14X17 Films separate this scanner even more from its competitors. iCRco is using the latest and most advanced components to allow ultra-high resolution scanning in the same compact and efficient scanner design that has made this product line successful since 1990.

Design Advantages...

The vertical orientation of the main components protects mirror and lens from particles and dust. These design advantages also save space, and allow for wall mount or desktop positioning. Fixed optical components, and a light path which is limited to a single mirror eliminates image deterioration that can be caused by vibration and reflective interference.

High resolution Mammography capabilities make the 2000SL the most versatile Film Scanner in the iCRco Product line.



Patented Design Technology



True Flat Scan Path



High Fidelity Images

iCR technology is the result of precision engineering which integrates electronic, optical and mechanical design.

This guarantees production of high quality digital imaging tools for the medical profession.





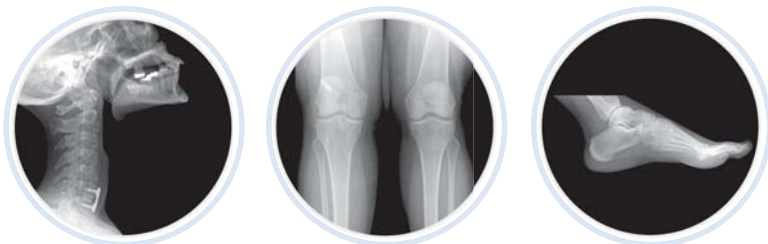
Key Items

- Premium X-Ray Digitizing equipment
- Integrated Light Box
- True Flat Scan Path™
- Advanced Image Processing
- DICOM 3.0 Interface
- iCR QPC XSCAN32 Software
- iCR EDGE High Fidelity Multi Scale Image Processing
- Interactive and automatic Image Processing

- iCRco's full range of Film Scanner solutions are designed to grow and adapt to the evolving medical imaging environment.
- iCRco, Inc. manufactures X-Ray Digitizing equipment and the new iCR Intelligent Computed Radiography device with precision engineering integrating electronic, optical and mechanical designs.

Learn More

For detailed information about iCRco's Film Digitizers, Computed Radiography Solutions, and Imaging Software please visit www.icrcompany.com.



www.icrcompany.com

Resolution Selections:

4 to 1000 dpi in 1 step increments

Exposure Settings:

From – 18 to + 600 in 3 step increments (higher values for darker films).

Gamma Settings:

Custom or standard presets

Optical Density Range:

.01 - 4.7 O.D. actual User selectable: 2 and 4 times oversampling. (Oversampling lowers background noise).

Minimum Computer Configuration:

Pentium III Class or better, 512 Mb RAM, Windows 2000, Windows XP Minimum 80 gigabyte storage recommended, Video card: 64, Mb Supported modem required for modern transfers.

Network card required for DICOM send. HIPPA Compliant Remote access software required for live service option.

Dual Interface:

FireWire or Hi - Speed USB Interface USB Standard. Firewire card and cable optional (High speed interface).

Scanning Modes:

16 bit grayscale
(65000 levels of gray)
12 to 8 bit conversion
(256 optimized gray levels)
24,30 and 36 color option available.

Power:

100-250V AC/ 2.8A max; 47-63Hz
(Universal power supply)

Scanning Speed:

300 dpi (4x4K) 30 seconds
150 dpi (2x2K) 12 seconds
Dependent on processor speed, available RAM, disk access time and video card.

* Specifications are subject to change without notice.

Integrated Light Box

Scanned and original images can be compared immediately for enhanced quality control of scanned images.

Large Media Sizes:

All transparent media up to 14x17 inches (35x45cm).

Operating Environment:

10-40°C (50-140°F), 20-80% humidity. Shock load resistance for mobile applications.

DICOM 3.0 Interface:

iCRco QPC Xscan32 software incorporates DICOM 3.0 image transfer. DICOM 3.0 interface for DICOM compliant systems, PACS and Teleradiology. TWAIN interface included.

Weight, Dimensions:

34 lbs (14 Kg)
Length 26"x Width 4"x Height 22"

Warranty:

1 year all parts and labor
Depot service available
Optional 2 year extended warranty

Other Features:

Ultra-High resolution scanning
Compact and Efficient
High Fidelity images
One Moving Part
Real time service available with remote access software

FDA Certification 510 [k] – K953942

Regulation number: 892.2030

U.S. and International Patents Granted



20406 Earl Street, Torrance, CA 90503
Phone: (310) 921-9559 Fax: (310) 921-2559
Email: info@icrcompany.com
Website: www.icrcompany.com

©2006 iCRco, Inc.